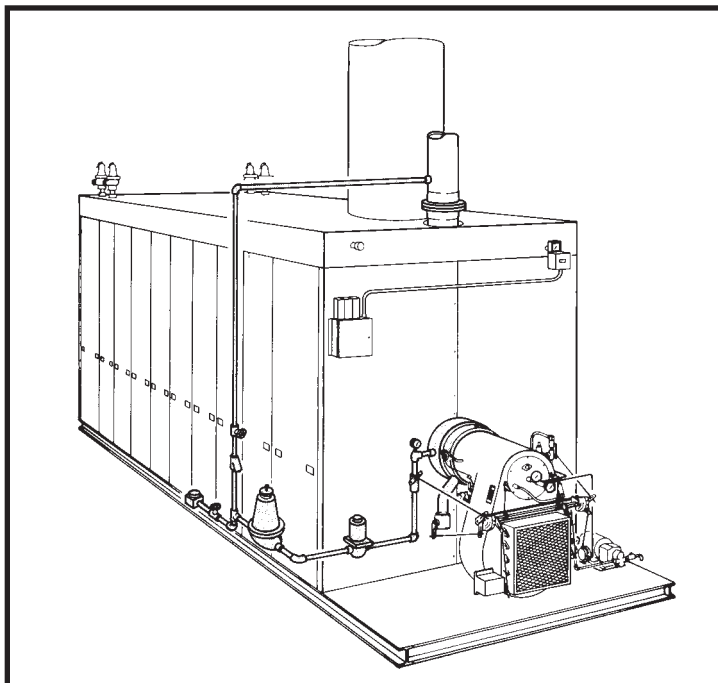
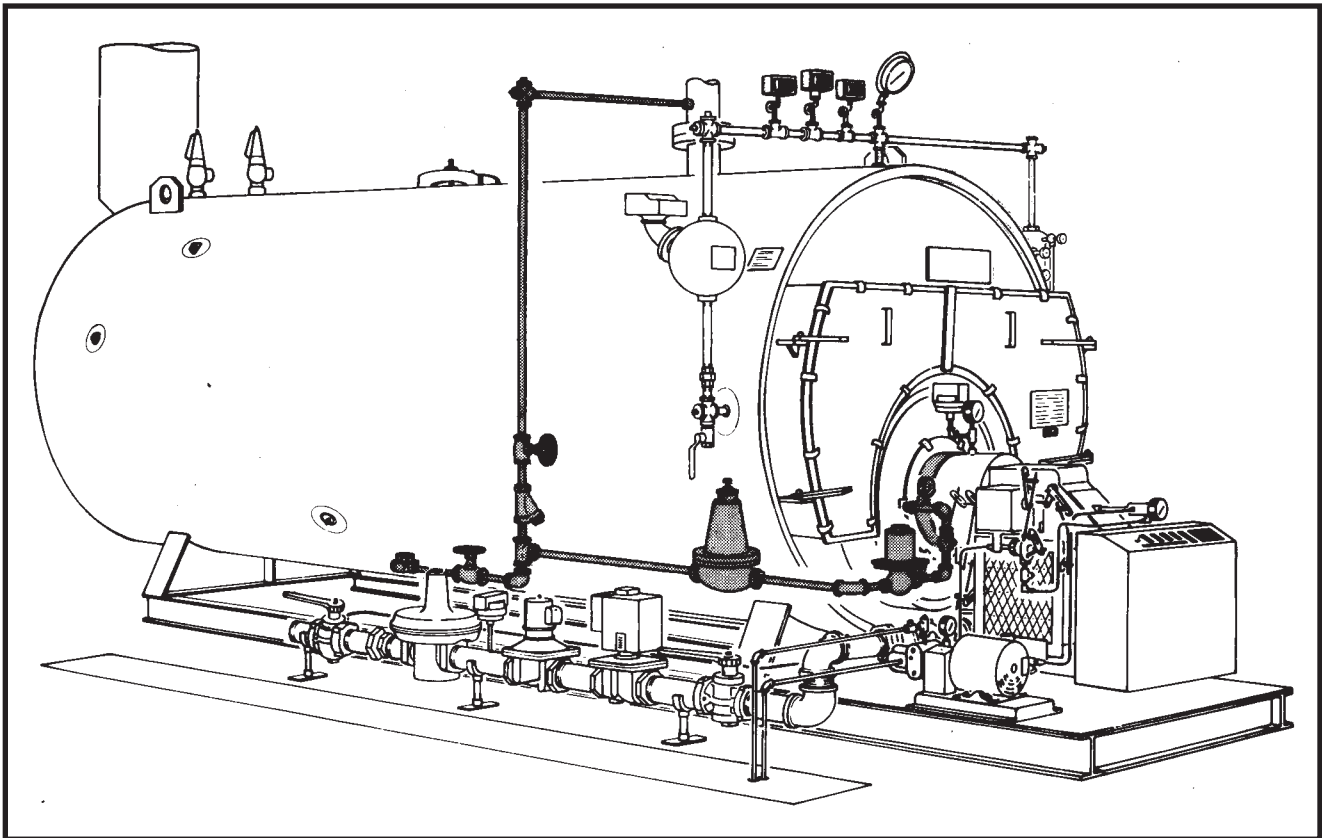


STEAM INJECTION for THERMAL NO_x REDUCTION



STEAM INJECTION SYSTEM NO_x REDUCTION FOR GASEOUS FUELS

- For forced, induced or natural draft applications.
- Firebox - scotch - water tube - cast iron boilers.
- UL listed system.
- Meets or exceeds NO_x emission guidelines of 30 ppm when firing natural gas.

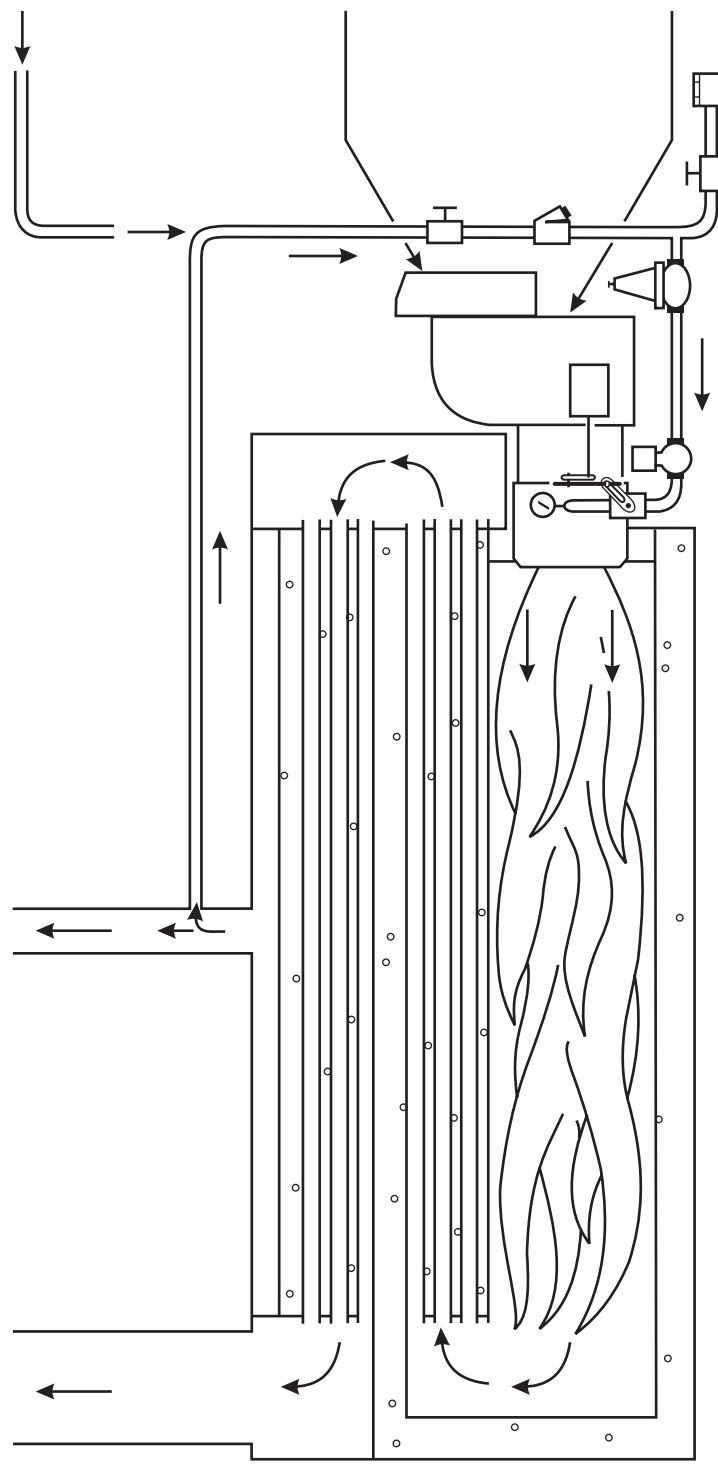
THERMAL NO_x REDUCTION



SI combustion head designed for easy installation. See specification table for requirements.

STEAM INJECTION (SI) SYSTEM is UL Listed. It is in UL's product category listing for burner assemblies with emission reduction equipment.

The STEAM INJECTION SYSTEM, as the name implies, introduces a small amount of steam around the outside of the combustion head and into the primary combustion zone. The steam is mixed into the combustion process reducing the flame temperature and altering the combustion. The lower flame temperature and altered combustion retard the formation of NO_x resulting in lower NO_x levels.



Can be operated with steam from auxiliary supply with low steam pressure interlock on burner.

Uncomplicated control system requires only minor modification to standard burner wiring and operation.

STEAM INJECTION SYSTEM uses a standard John Zink burner with its many years of proven ability to fire a multitude of applications.

SPECIFICATIONS AND CAPACITIES

¹ MODEL	CAPACITY/MBH	² STEAM INJECTION RATE LBS. / HR.	MINIMUM STEAM SUPPLY PRESSURE PSI	³ MINIMUM BOILER OPENING
SI (R, S) 8	1000 - 2800	30 - 90	7	10-1/8"
SI (R, S, F, FL) 10	2500 - 5300	80 - 170	8	12-1/8"
SI (R, S, F, FL) 12	4500 - 8400	145 - 275	8	14-1/8"
SI (S, F, FL) 14	8000 - 12500	260 - 410	8	16-1/8"
SI (F, FL) 16	11000 - 17000	360 - 550	10	18-1/8"
SI (F, FL) 18	16000 - 31500	520 - 1000	12	20-1/4"
SI (F) 20	29000 - 34000	950 - 1100	12	22-5/8"
SI (F) 22	33000 - 42000	1050 - 1350	15	24-3/4"

¹ Model Numbers same as standard burner only prefixed with SI. For example, a steam injected F16-GO-150 becomes a SIF16-GO-150.

² Steam Injection rate is nominal and may vary with application and required NOx level.

³ Minimum boiler opening ID or width and height that will allow for installation of steam injection head, additional opening may be required for boiler refractory frontplate. Cutout for pilot also required, see standard burner model specification sheets. Dimensions may change without notice, request print.

⁴ Steam Inlet position on burner head may vary on some models - Contact Factory.

Standard Equipment

1. Steam Injection Combustion Head
2. Steam Flow Control Valve
3. Steam Pressure Reducing Valve - Supplied on systems with more than 15 psig operating pressure.
4. Steam Solenoid Valve
5. Steam Manifold Pressure Gauge
6. Steam Strainer
7. Steam Trap
8. Steam Manual Shutoff Valve

John Zink Company, LLC

P.O. Box 21220 Tulsa, Oklahoma 74121-1220

© 2005 by John Zink Company, LLC